

# KVC's Continuum of Care



*We all need connection.*

KVC Health Systems has one of the nation's broadest arrays of child welfare and behavioral health services. Nearly 200 years of serving children and families with the most complex needs has given KVC expertise that is sought both nationally and internationally.

[www.kvc.org](http://www.kvc.org)



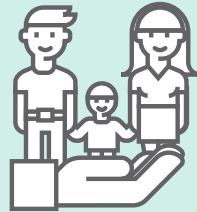
## In-Home Prevention

- Parenting education & support
- Family crisis stabilization
- In-home therapy
- Family preservation
- Peer-based solutions
- Respite care as prevention



## School- and Community-Based Prevention

- Early childhood education
- School-based interventions
- Day treatment (K-12 schools)
- Outpatient mental & behavioral health
- Intensive outpatient programs (IOP)
- Substance use treatment
- Intellectual and developmental disability (IDD) services



## Kinship Care

- An alternative to foster care or adoption
- Care provided by a family member or someone who has a healthy relationship with the child such as a coach, family friend, teacher, or neighbor, when they are unable to live with their biological parents
- Care by relatives or non-related kin for children in foster care



## Foster Care or Treatment Foster Care

- Highly trained caregiver families
- Family reunification services the primary goal of foster care
- Adoption services when needed
- TFC: Highly trained families caring for youth with behavioral health needs
- Independent living skills services



## Residential Treatment

- Intensive, longer-term clinical treatment in a home-like environment
- Qualified Residential Treatment Programs (QRTPs)
- Psychiatric Residential Treatment Facilities (PRTFs)



## Inpatient Children's Mental Health Hospitals

- Acute hospitals for child mental health crisis stabilization
- Full medical, clinical, nursing, psychiatric, and medication management services
- Shorter term stays

**SPANS THE ENTIRE CONTINUUM:** STRENGTHENING FAMILIES | TRAUMA-INFORMED | CULTURALLY SENSITIVE

**← LEAST INTENSIVE**

More People Served This Way  
Lowest Cost per Child/Family

Fewer People Served This Way  
Highest Cost per Child/Family

**→ MOST INTENSIVE**